

Training Offerings



DO YOU HAVE THE CRITICAL MINDSET[®] that will allow you to survive a violent confrontation?

BIT Consultants, LLC is pleased to be able to offer customized training in a variety of subjects to include our suite of **global solutions** for threat management. Today's world is characterized by ever changing threats to individuals and to institutions. Businesses of all kinds, such as schools, malls, chemical plants, and office buildings, have seen incidents of violence occur on their facilities. Acts of violence continue to increase in other areas such as our courts, airports, factories, and numerous other facilities. We can enhance your employees' safety during incidents of violence by training them on what to do and why. BIT Consultants can give them the specialized training they need to overcome confusion and fear, which can keep them from acting in critical situations. Receptionists, customer service, and human resources personnel are among those on the front line when it comes to contact with the public. The training we give will not only increase their survivability during acts of violence, but will help minimize your company's potential exposure to civil liability torts and worker's compensation claims. We will teach them how to develop the "Critical Mindset" [®] necessary to face an adversary and make vital choices for themselves and others.



Columbine High School April 20, 1999

WHO SHOULD ATTEND ?: Corporate Executives, University and School Faculty, Administrators, Students, Emergency Room Personnel, HR Personnel, Social Service Professionals, Law Enforcement personnel, Probation & Parole, Judges and Bailiffs, Realtors, Security Asset Protection Specialists, Bank, Mortgage and Financial Personnel. Airport Security, Retail Management, and anyone who wants to prevail when facing an adversary.



None of us want to believe that events like 9-11 or some of the school tragedies could occur again. Reality tends to show otherwise, however. To ensure they don't have the same kinds of impact as before, we must be proactive in preparing for the unthinkable.

We would like to introduce you to BIT Consultants, LLC. We have an outstanding combination of service offerings and solutions that we can tailor to your exact needs. Our flagship offering is called SAFRE, a proprietary methodology for ensuring the physical security of clients. Give us a call to schedule a no-obligation briefing on SAFRE. In addition to SAFRE, some of our other areas of expertise are identified:

- Information Technology, Network Architecture, Program Management, Data Base Administration
- Training, Physical Security, IT Security, Emergency Management Actions, Disaster Preparedness/ Recovery,
- Scenario and Exercise planning, Safety Awareness Training, Active Shooter and Contingency Planning,
- Grant Writing, and SBA 8a applications.



A VETERAN OWNED AND STAFFED COMPANY

BIT Consultants, LLC
3100 Presidential Drive
Fairborn, Ohio 45324
Ph: 1-866-797-0200 or 937-426-8730
info@bitconllc.com
FAX 937-426-8738



OUR VISION:

Is to offer the best Global Solutions for Critical Infrastructure, Physical Security, Vulnerability Assessments, Information Technology and Customized Training for Government, and the Private Sector



BIT Consultants, LLC
3100 Presidential Drive
Fairborn, Ohio 45324
Ph: 1-866-797-0200 or 937-426-8730
info@bitconllc.com
FAX 937-426-8738



The Mission

Our company's mission is to provide technology solutions, effective training and world class service for our clients. We are committed to excellence in every phase of service we offer to government entities, private corporations and the general public. Our goal is to continually strive towards securing the future of our clients in areas of Security Assessments of Facilities and Restricted Environments (SAFRE), Information Technologies (IT) Solutions, Financial Solutions, Continuity in Operations Planning (COOP) and Training. We have and will continue to dedicate our efforts in making this country a secure and safe place for our citizens, our children and our children's children. Our mission is in line with the National Security Strategy of the United States of America....

"Today you must do more than is required of you. Never think that you have done enough or that your job is finished. There's always something that can be done - something that can help to ensure victory. You can't let others be responsible for getting you started. You must be a self-starter. You must possess that spark of individual initiative that sets the leader apart from the led. Self-motivation is the key to being one step ahead of everyone else and standing head and shoulders above the crowd. Once you get going - don't stop. Always be on the look out for the chance to do something better. Never stop trying. Fill yourself with the warrior spirit and send that warrior into action!" - General (Ret.) George Patton - Commanding General, US Seventh Army



Domestic or International Terrorism ...

You Must Be Ready Today

NOT TOMORROW!!!!

The Battlefields have changed and so have the Rules of Engagement!

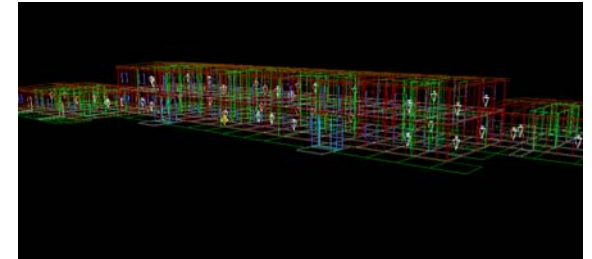


Our Halls of Justice no longer secure our Judges and have become vulnerable to courtroom violence...

Besides our expertise in assessments, BIT also offers our clients global solutions in customized training for threat management. All classes will be held in Fairborn, Ohio unless otherwise arranged. Companies, wanting to send large numbers, may choose to have our staff conduct courses at their location to allow more employees to benefit from our unparalleled training and be cost effective.



SAFRE a proprietary methodology that incorporates key elements of existing risk analysis, gap analysis, adversary path-tracking, counter-terrorism techniques into a performance-based approach for vulnerability assessments. Using SAFRE, we can give clients a quantifiable baseline of their physical security and a detailed roadmap, based on cost-benefit analyses, for improving overall security to desired levels of effectiveness. SAFRE's unique approach includes the use of complex computer models/simulations based on scientifically-derived algorithms and validated processes. A major advantage for our clients in using BIT is that our analysts are highly trained and experienced in the use of these applications. The results and advantages for our clients are similar in nature to those obtained when using a highly skilled craftsman versus an apprentice. Before you spend your funds on the usual checklist-based assessments, call us to see the difference in results and quality. You will also be pleasantly surprised to learn just how little real quality costs.



COOP BIT Consultants has formed a strategic alliance with BOLD PLANNING, Inc. the developer of EMplans.com a web based application. It can be used to enhance emergency preparedness for any size governmental agency tasked with the implementation of a disaster preparedness plan and/or recovery plan. EMplans.com is available 24/7 online and effortlessly guides users through the development of a standardized COOP plan. In addition it has the ability to upload supporting documents to ensure maximum plan detail (Including but not limited to floor plans, pictures, existing emergency documents, etc.). Based on industry research, no other solutions are currently available that match the specific purpose and functionality of EMplans.com. BIT Consultants, LLC and Bold Planning, Inc. are committed to providing clients with the best solution for ensuring readiness. Contact BIT Consultants today to arrange a demo.

EMplans.com has been adopted for use by all state agencies in South Dakota and by over 1500 various state and local agencies nationwide.